

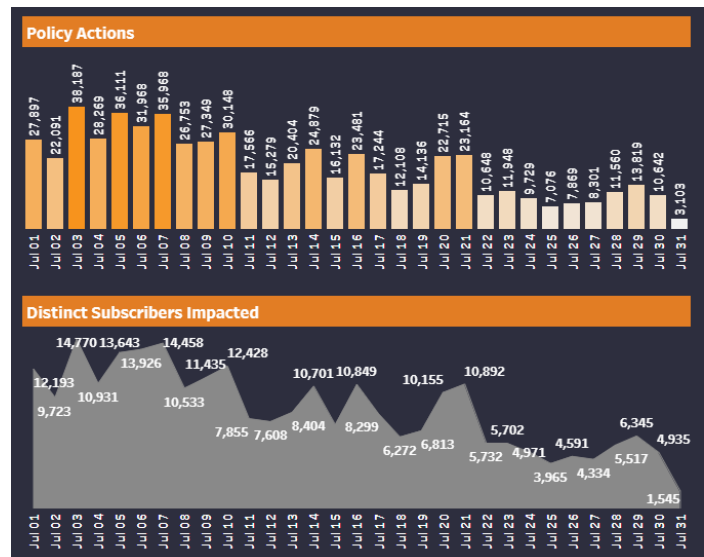
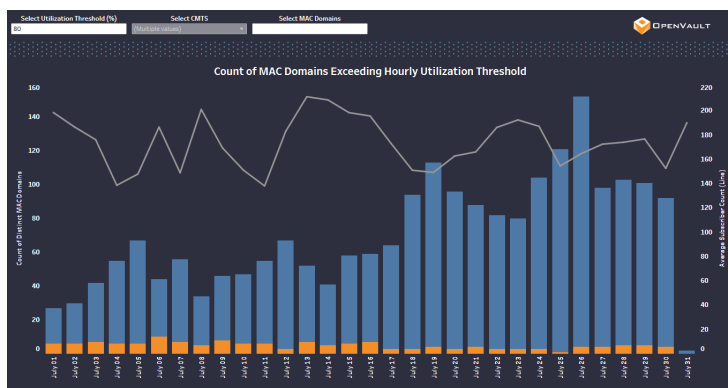
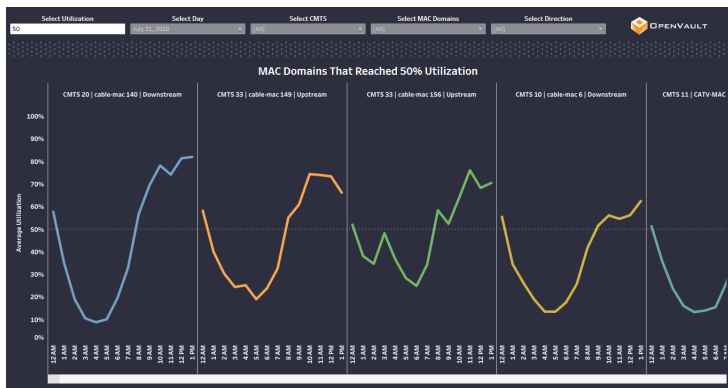
OV Network Insights Dashboard

Now broadband providers can gain powerful visibility into the performance of their networks with a quick-to-deploy, cloud-based solution. OV Network Insights Dashboard provides near real-time insights into the utilization and congestion on networks, historical trends, and capacity planning, which correlates upstream and downstream traffic utilization levels and enables analysis at the network and segment level.

- Analyze and monitor network utilization at the node, MAC domain, and interface level to enhance planning, optimize capital expenditures, and positively impact subscriber experience infrastructure
- Identify worst performing and most penetrated nodes across markets
- Apply filters and drill-downs for such criteria as: date; market; CMTS; MAC domain; node; and interface

OV Network Insights Dashboard is only the beginning and serves as the foundation for other integral and swiftly launched solutions such as OV PNM, OV PMA and OV Congestion Manager.

Insights at a Glance:



At your fingertips you'll identify users approaching and exceeding significant utilization levels so that you can apply policy actions, as well as target subscribers who can benefit from upgrade packages - which improves their satisfaction, your NPS and increases your ARPU.

10+ Years of Industry Leadership

OpenVault serves 150+ broadband operators in the US, Europe, APAC, LATAM and Caribbean markets. We've helped them improve annual revenue by 100s of millions of dollars and we do so for more operators than any other broadband-focused software vendor in the world.

No other company knows more about cable, fiber and wireless broadband subscriber usage behavior and how to use network data to drive revenue, reduce costs, better manage networks and improve customer satisfaction and retention than OpenVault. Learn how OpenVault can make a significant difference in managing and improving your network congestion and associated cost challenges.